



WHAT DRIVES

BIOLOGICAL DIVERSIFICATION?

DETECTING TRAITS UNDER SPECIES SELECTION

RICHARD G. FITZJOHN

University of British Columbia
Macquarie University



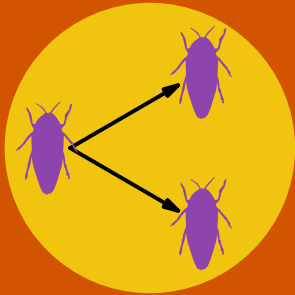






SPECIES SELECTION

Variation

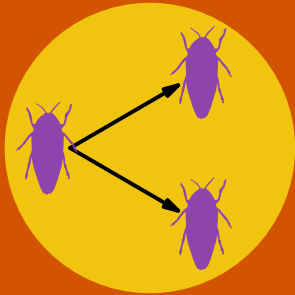


Heritability



Differential fitness

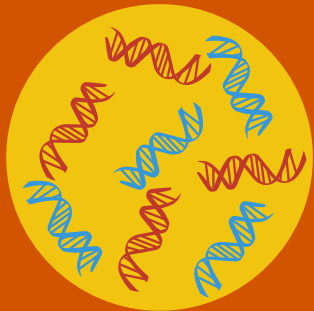
Variation



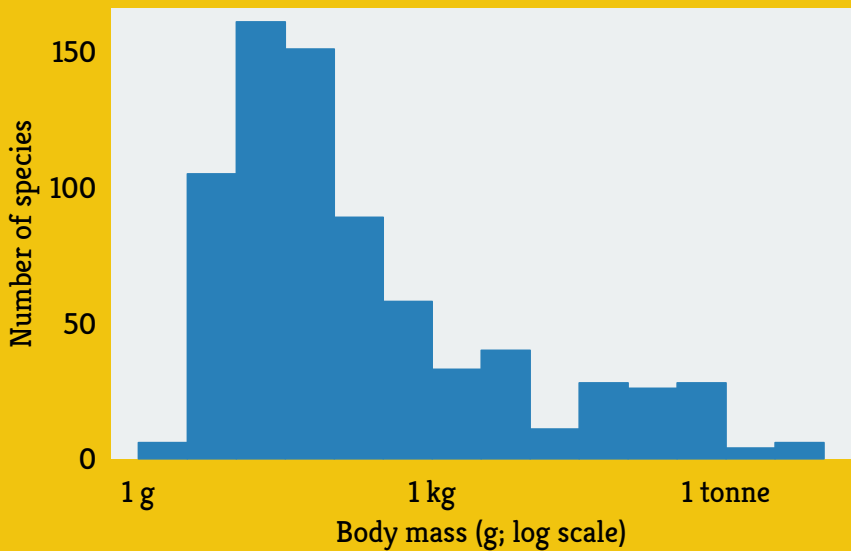
Heritability

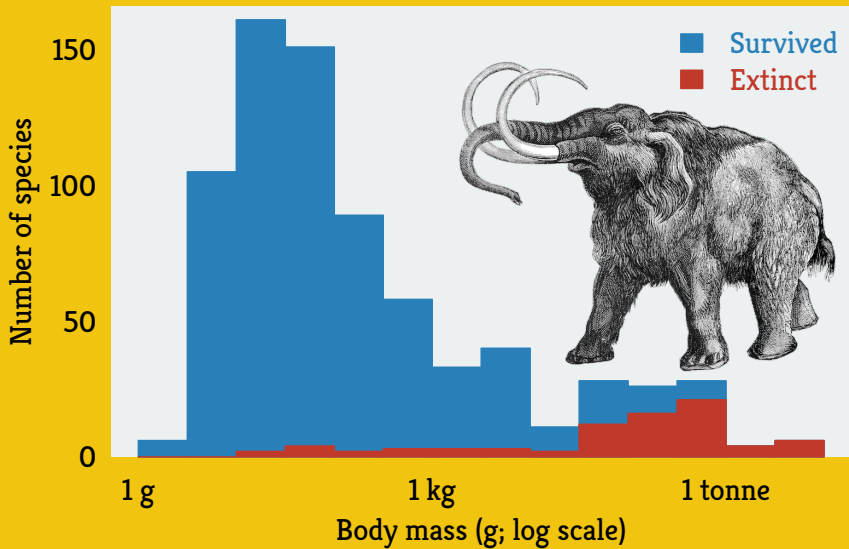


Differential fitness



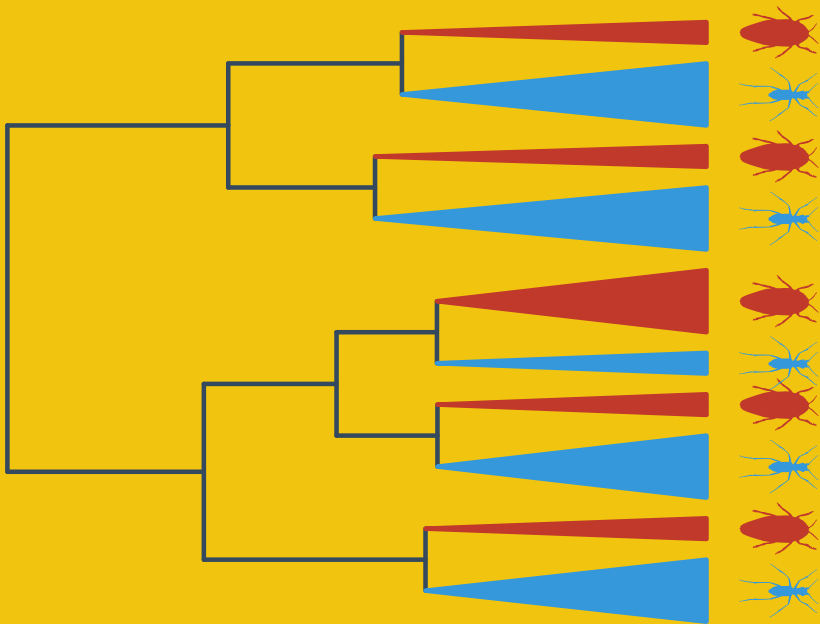
SPECIES SELECTION
HAS NOT BEEN POPULAR



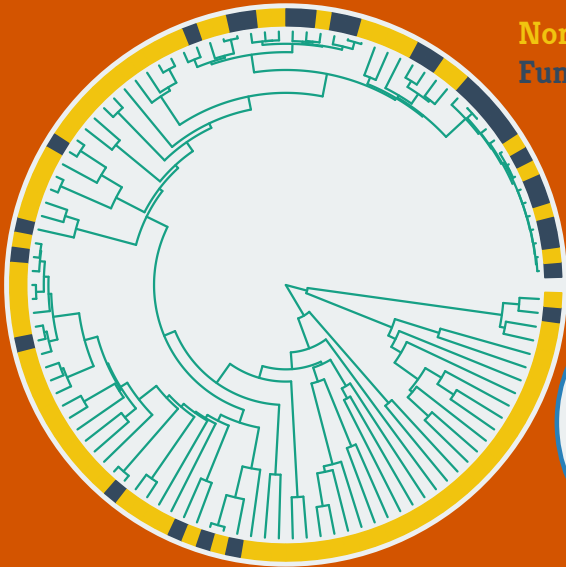


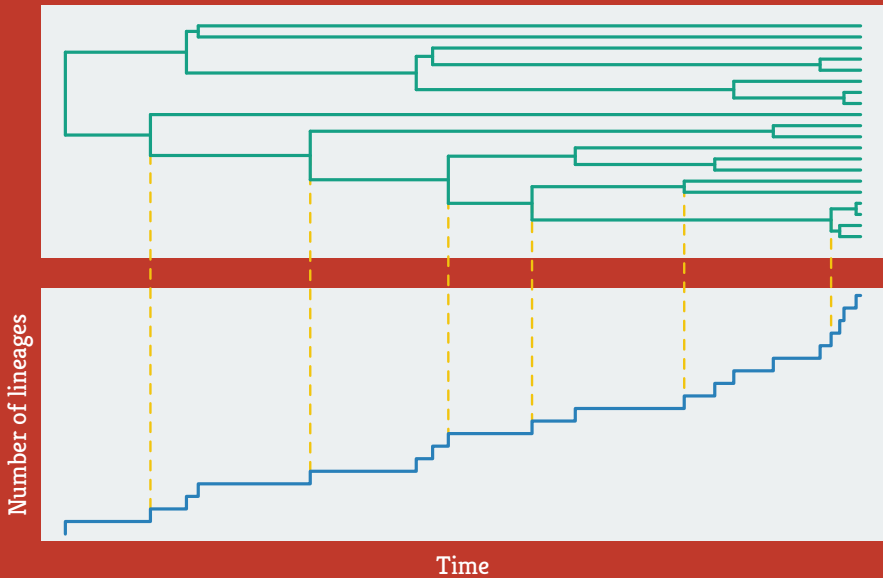
HOW TO DETECT SPECIES SELECTION?

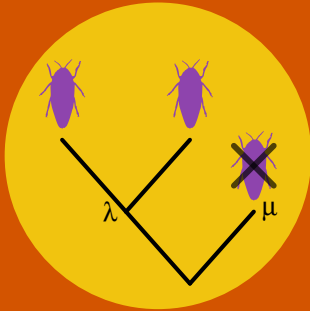




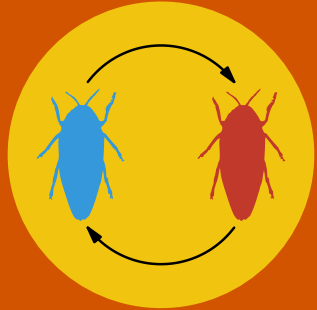
Normal
Functionally asexual



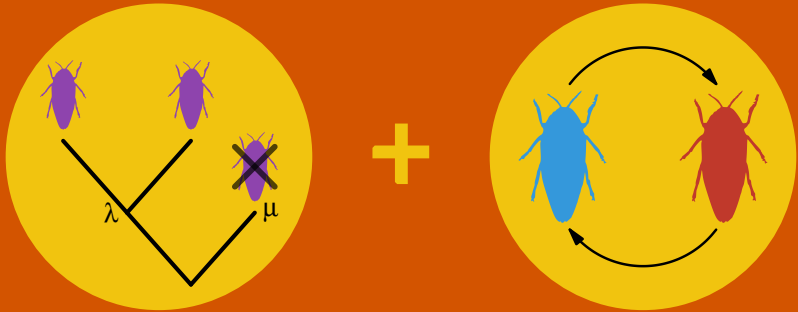




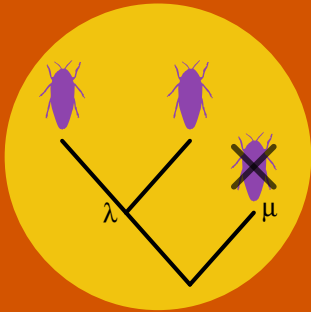
Speciation / extinction: birth death model



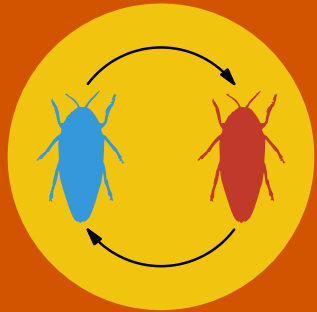
Trait evolution: Markov model



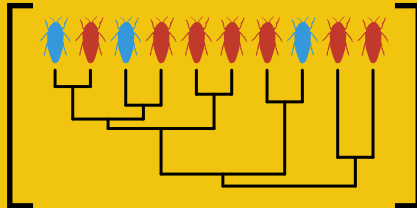
BiSSE: Binary State Speciation & Extinction

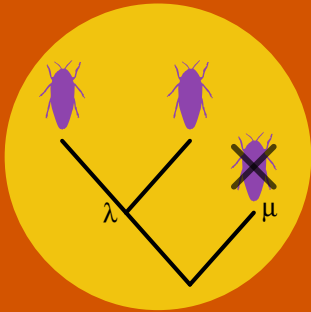


+

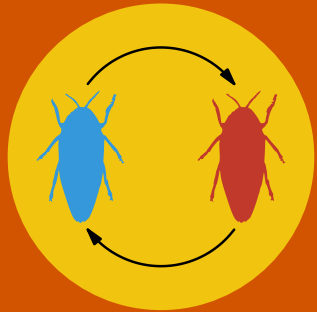


Pr



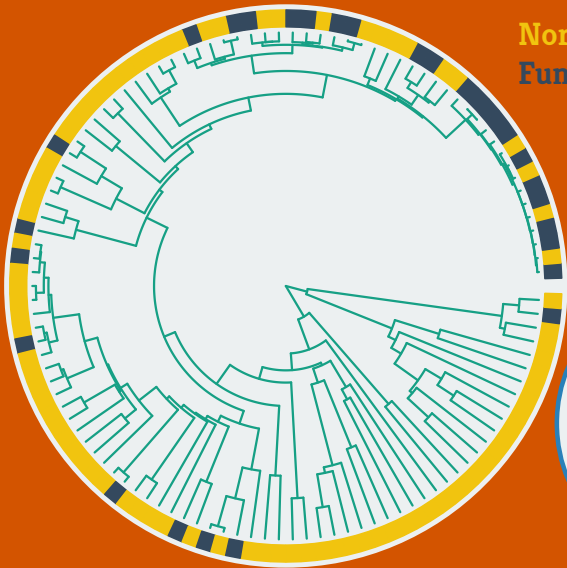


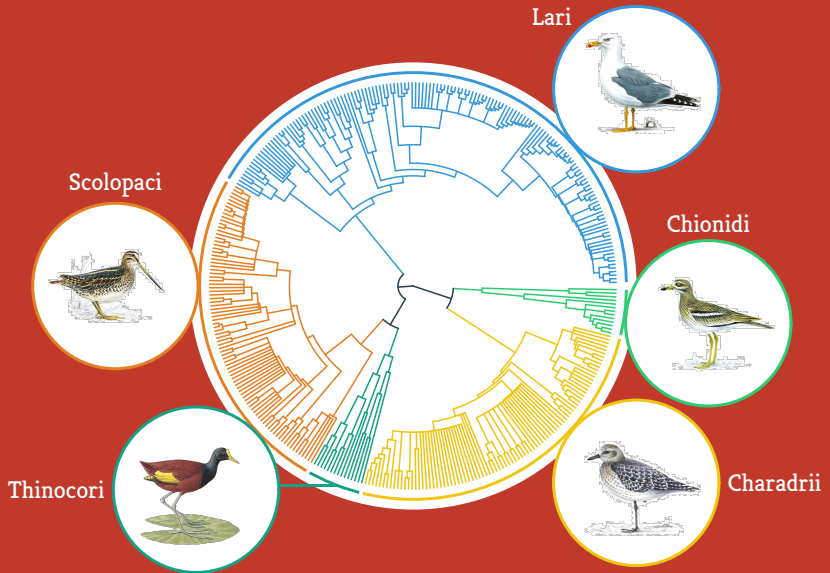
+

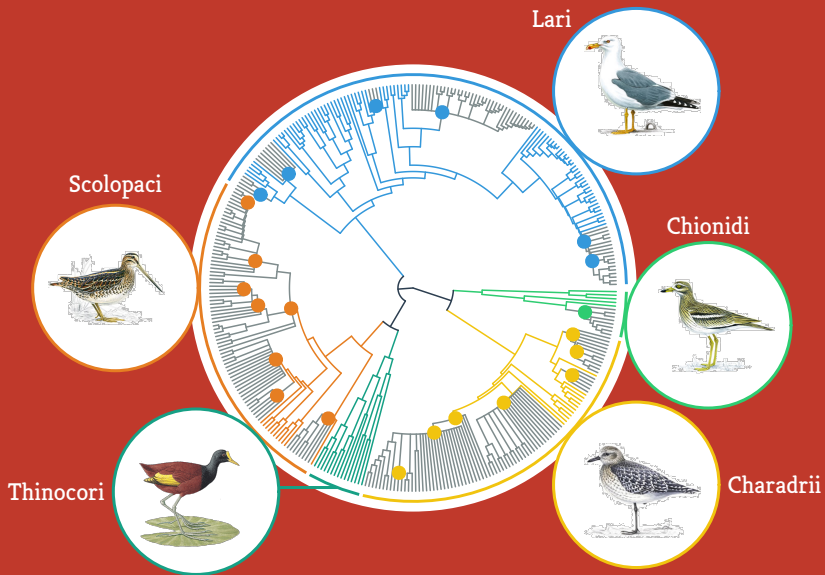


**COPING WITH
PHYLOGENETIC
INCOMPLETENESS**

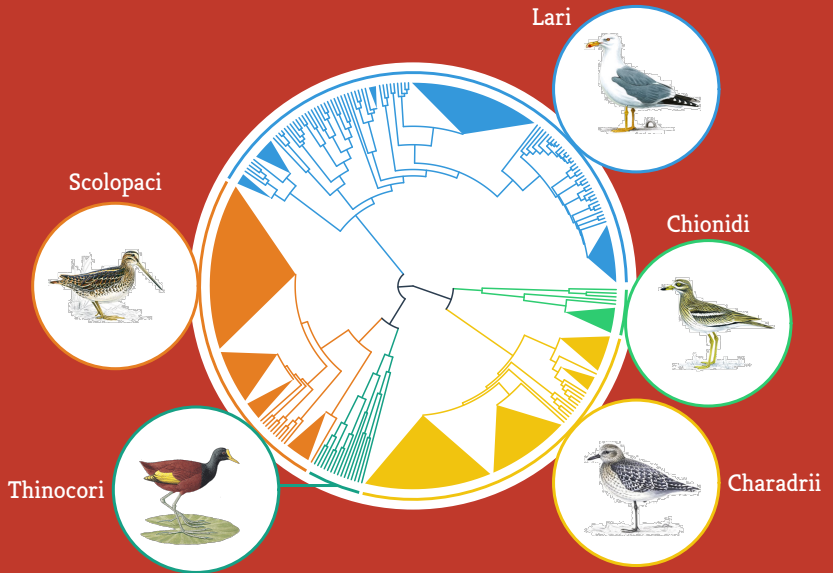
Normal
Functionally asexual

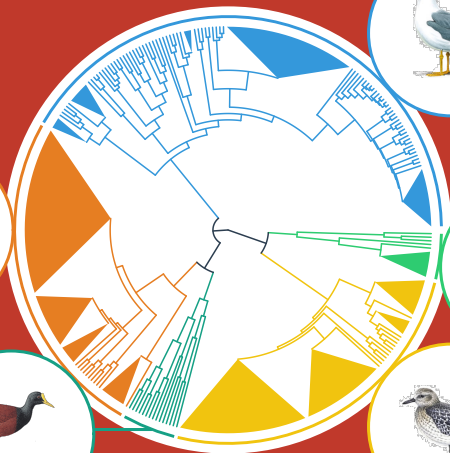






Tree: Thomas, Wills & Székely 2004





Lari



Scolopaci



Chionidi



Thinocori



Charadrii



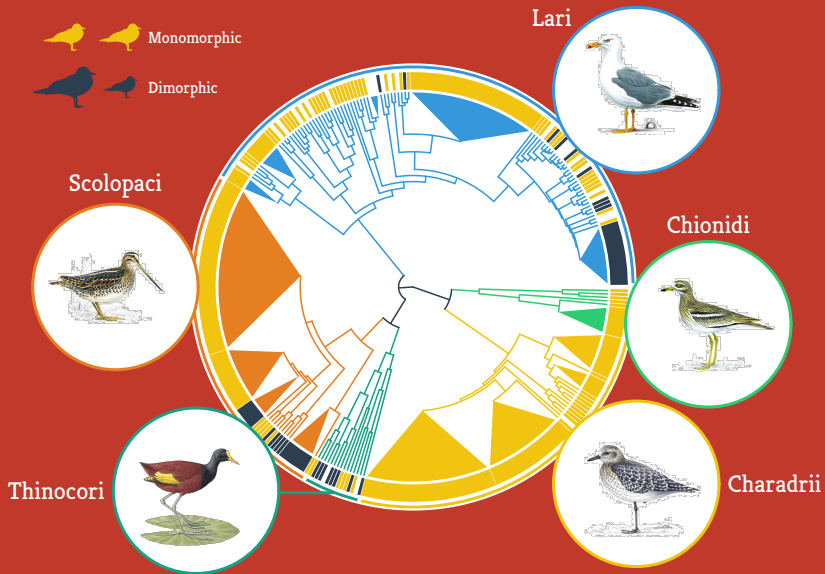


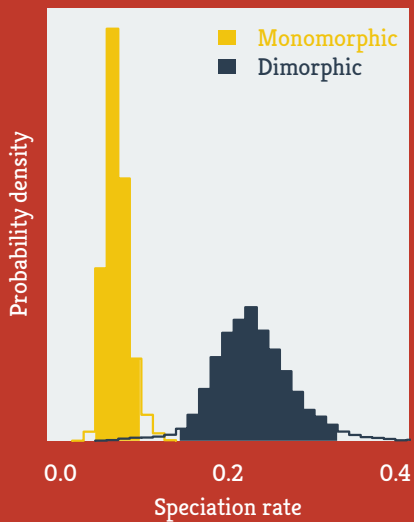
Photo: Thor Veen

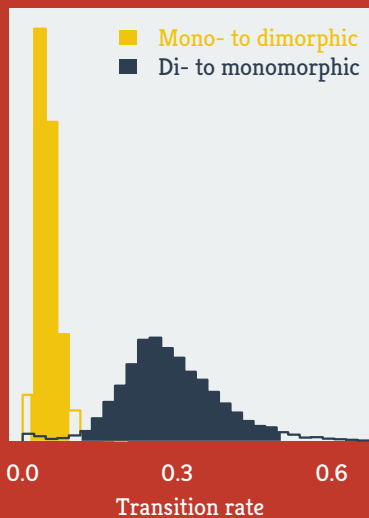
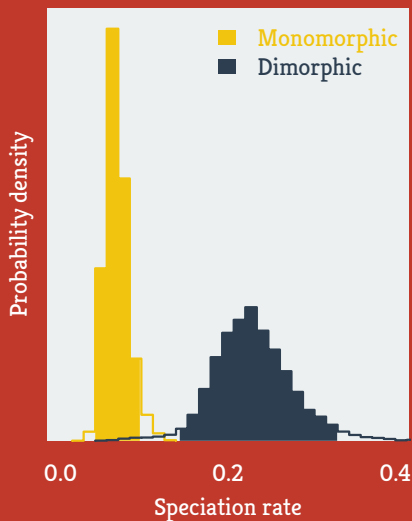
Is

sexual size dimorphism

under species selection?





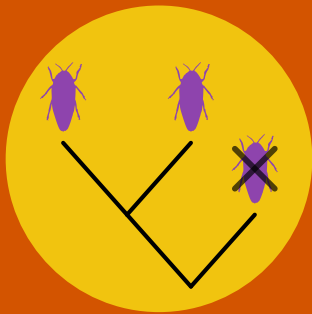


Is

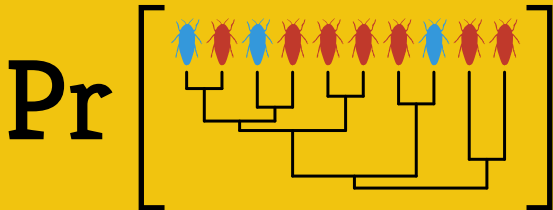
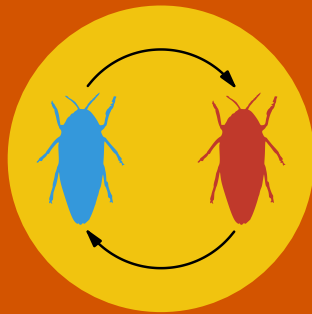
sexual size dimorphism
under species selection?

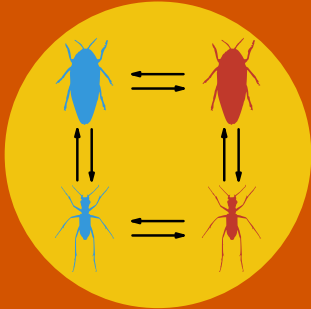
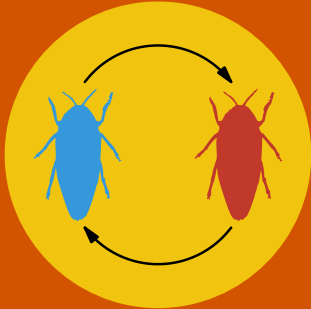
Perhaps briefly

DEALING WITH MULTIPLE TRAITS



+

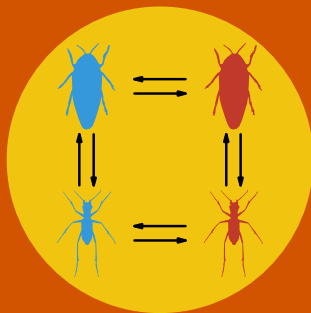
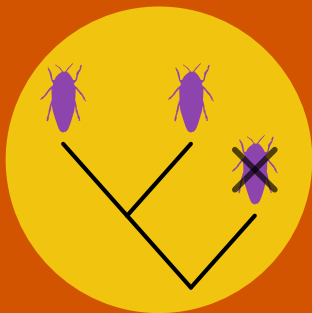






MuSSE: Multi State Speciation & Extinction





Speciation rate:

$$\lambda = \lambda_0 + \lambda_{\bullet} + \lambda_{\text{ant}} + \lambda_{\bullet \times \text{ant}}$$

Monogamous: ■
Solitary: ■



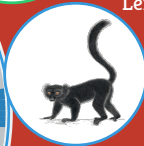
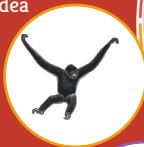
Cercopithecoidea

Lorisiformes

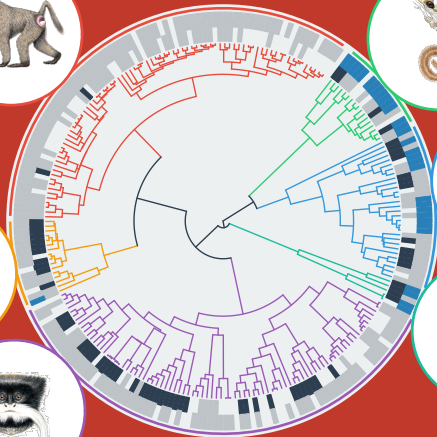


Lemuriformes

Hominoidea



Tarsiformes

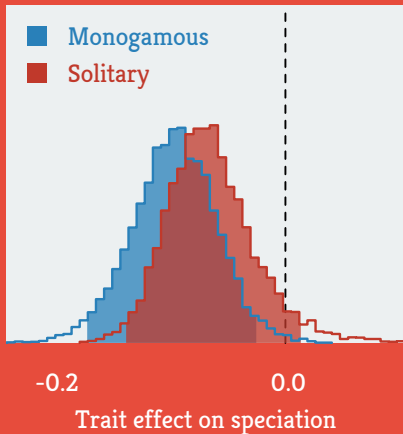


Platyrrhini



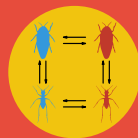
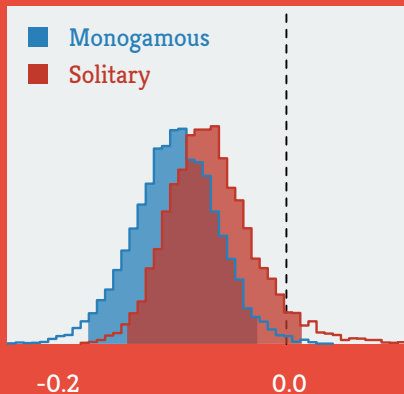


BiSSE (independent)

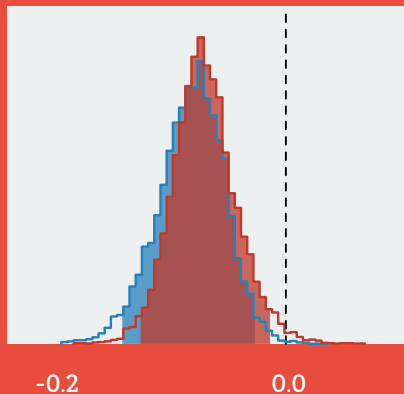




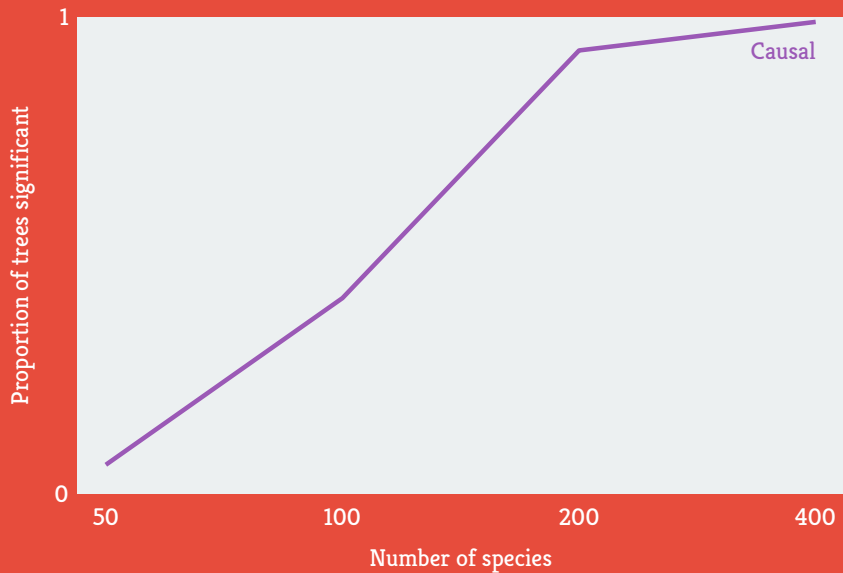
BiSSE (independent)

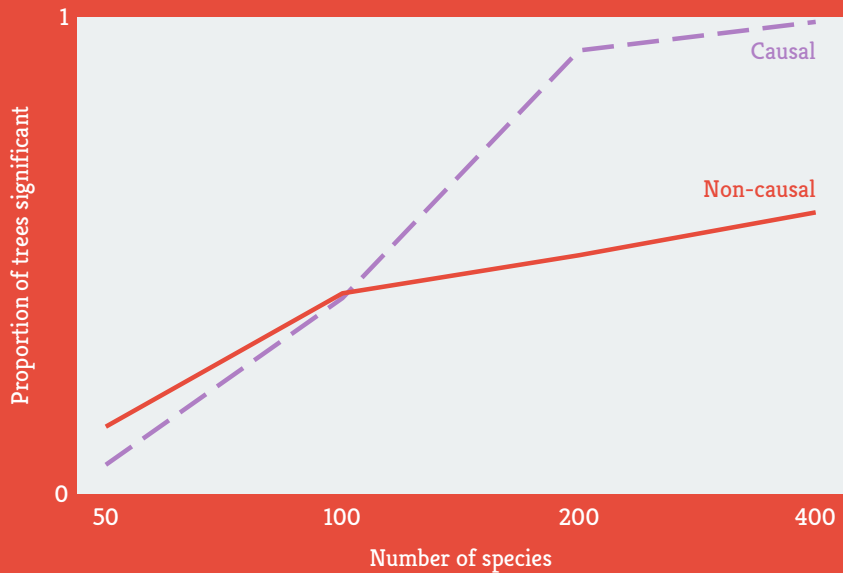


MuSSE (simultaneous)

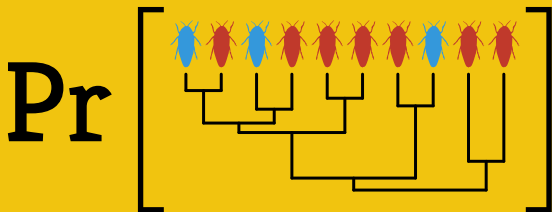
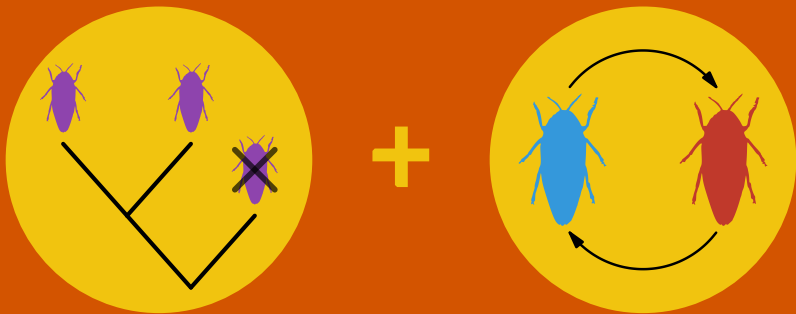


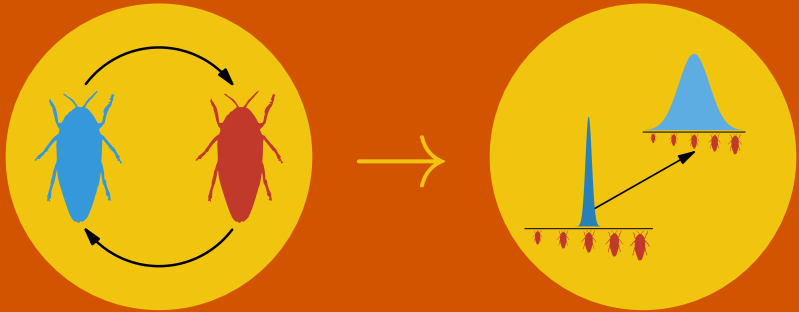
Trait effect on speciation



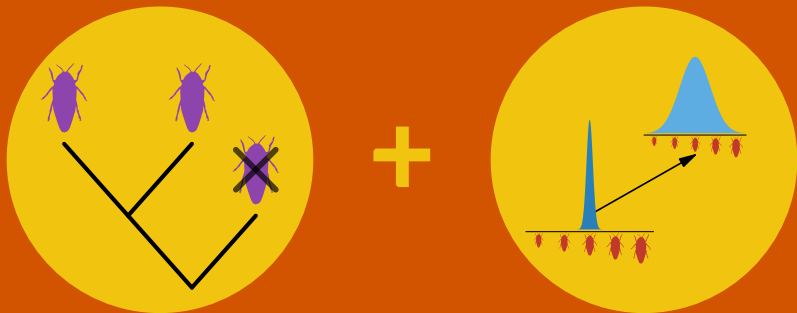


QUANTITATIVE TRAITS

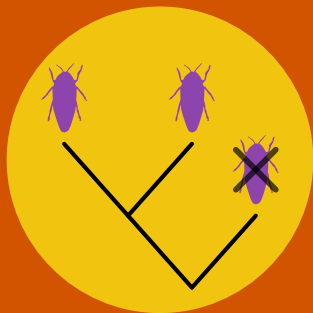




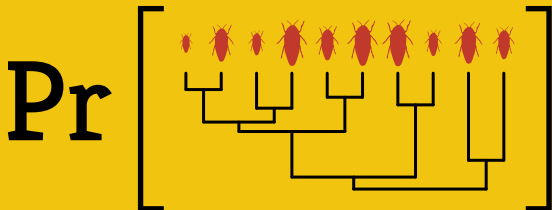
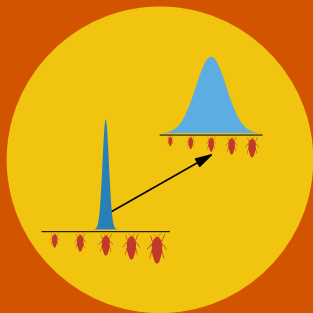
Trait evolution: Brownian Motion

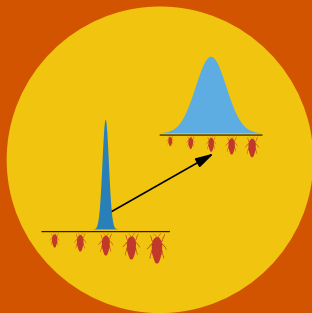
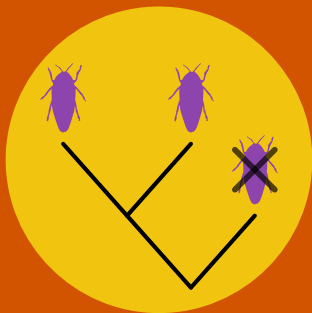



QuaSSE: Quantitative State Speciation & Extinction



+





speciation rate = function []

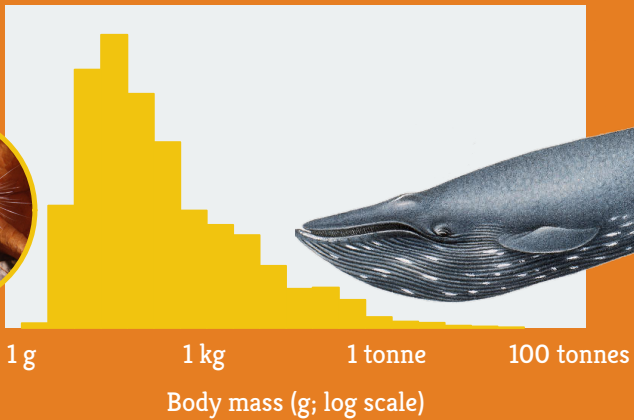
Why are there
so many small
mammal species?

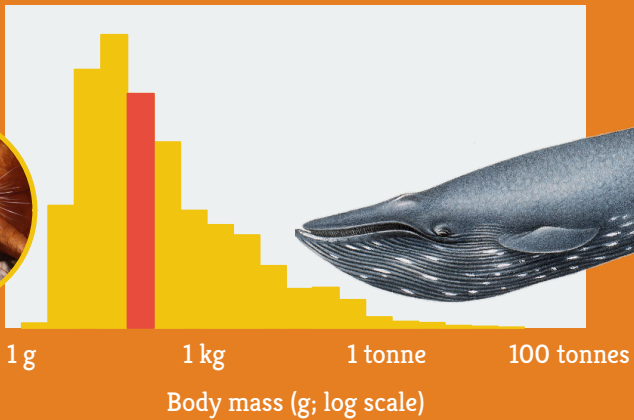


1.8g

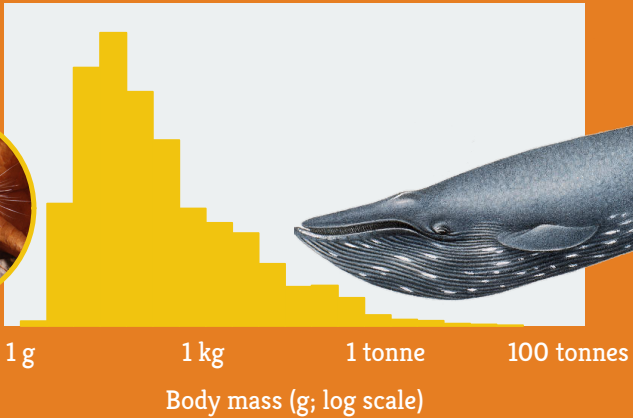


> 170 tonnes





Cope's rule



Cope's rule



1 g

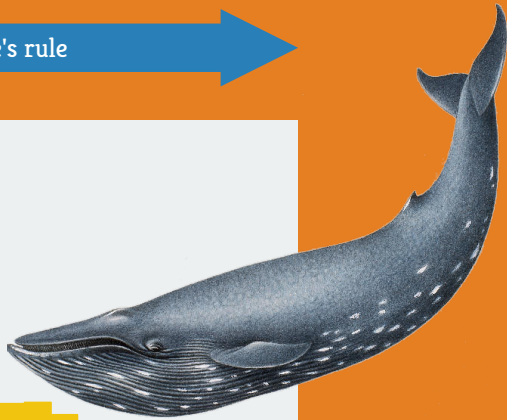
1 kg

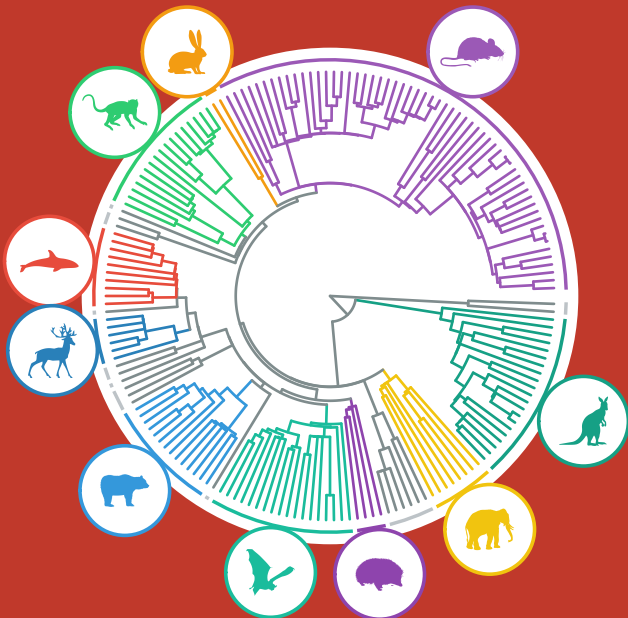
1 tonne

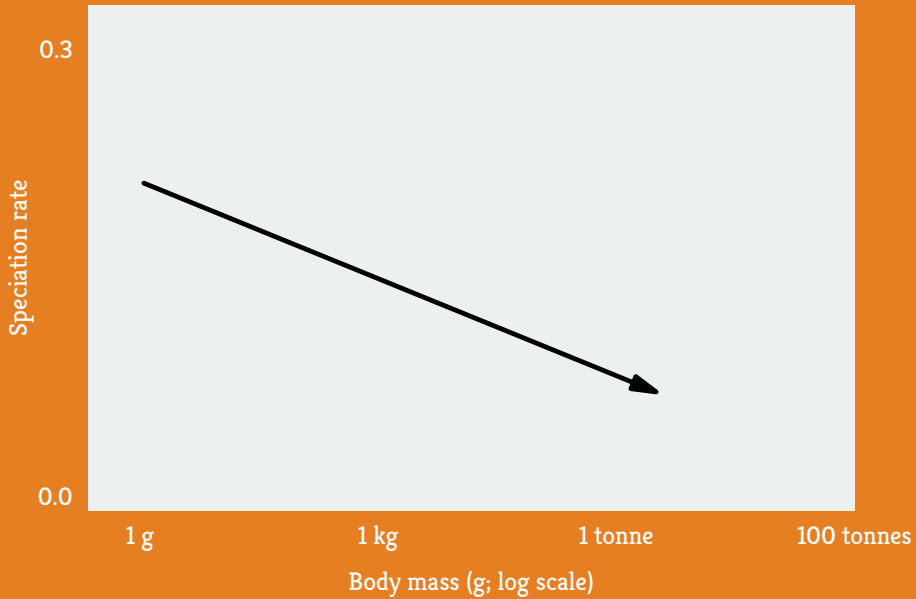
100 tonnes

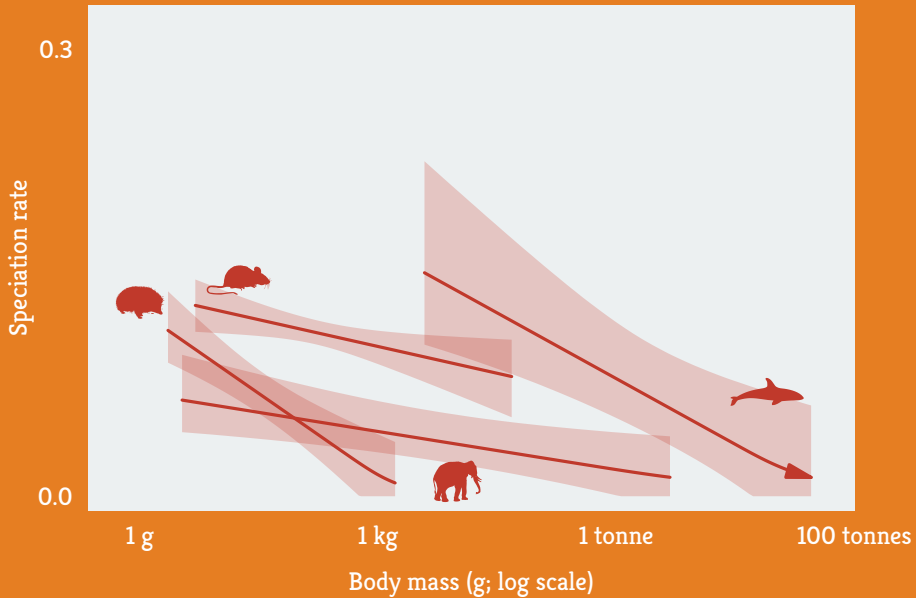
Body mass (g; log scale)

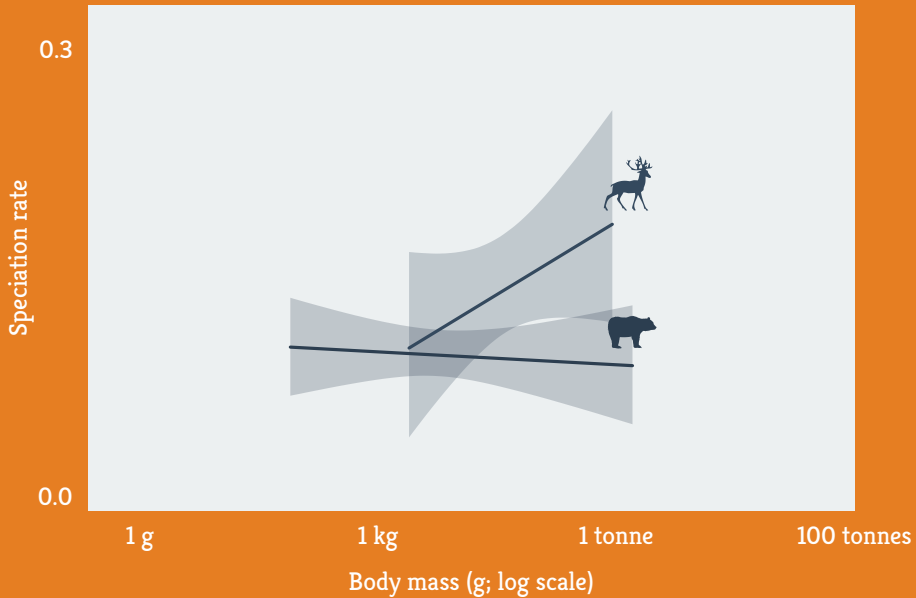
Species selection

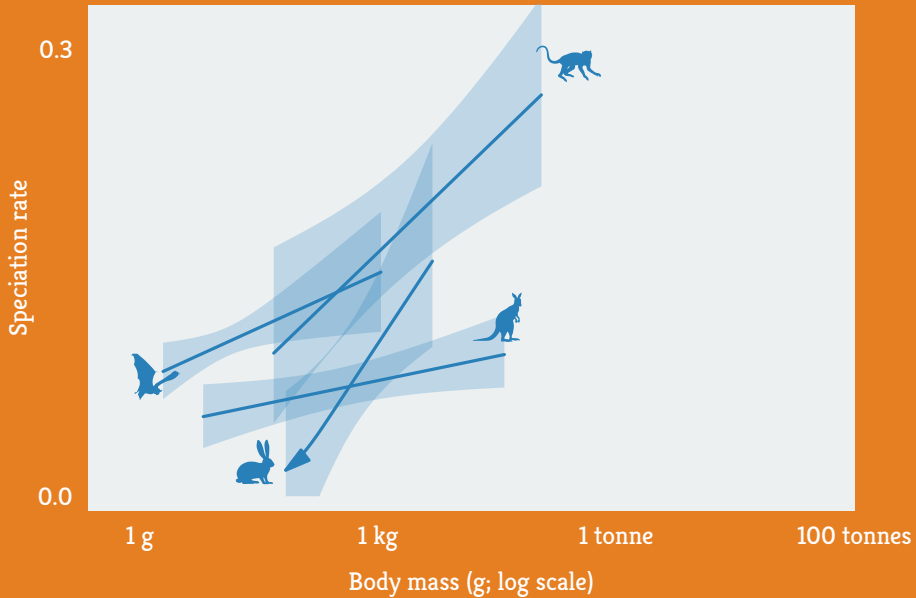


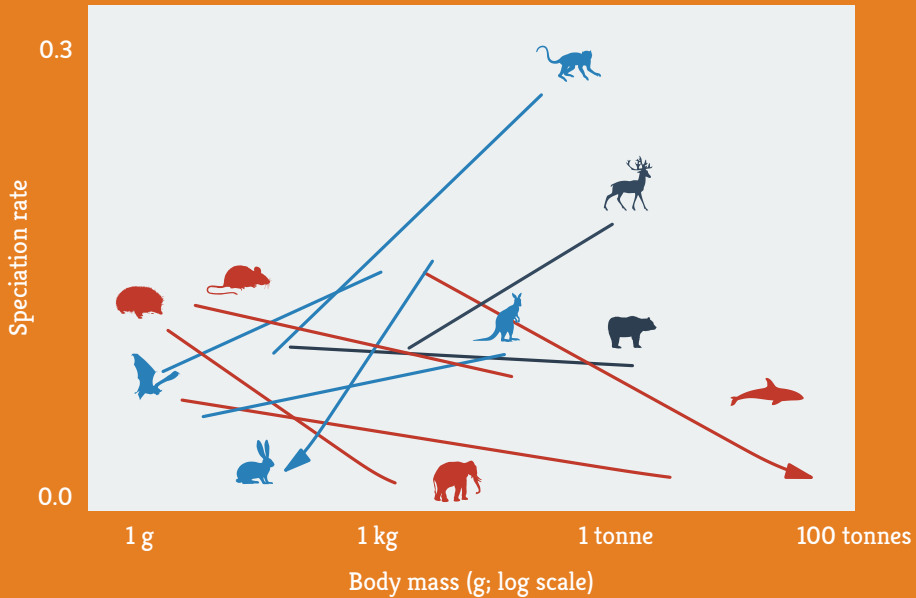












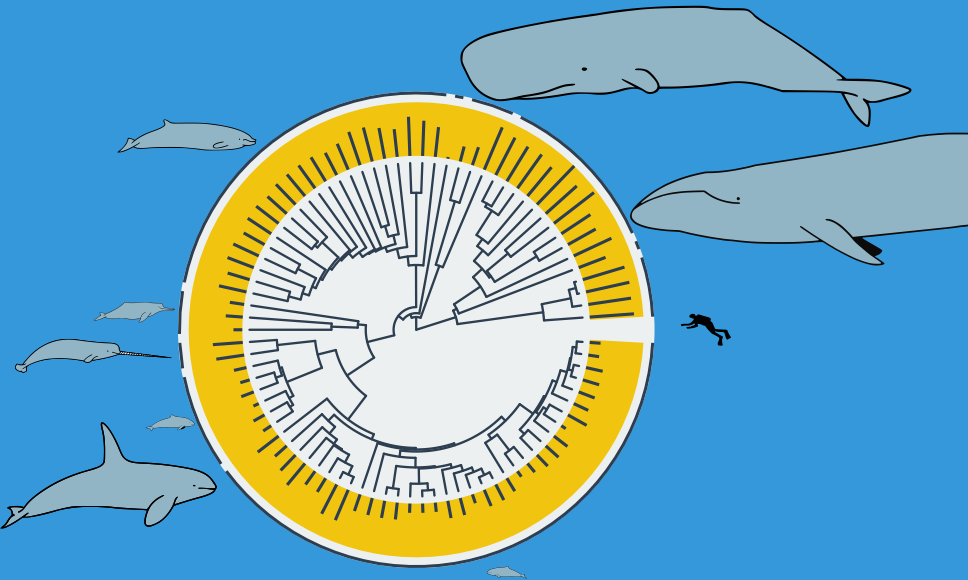
Why are there
so many small
mammal species?

Probably not species selection

LIMITATIONS

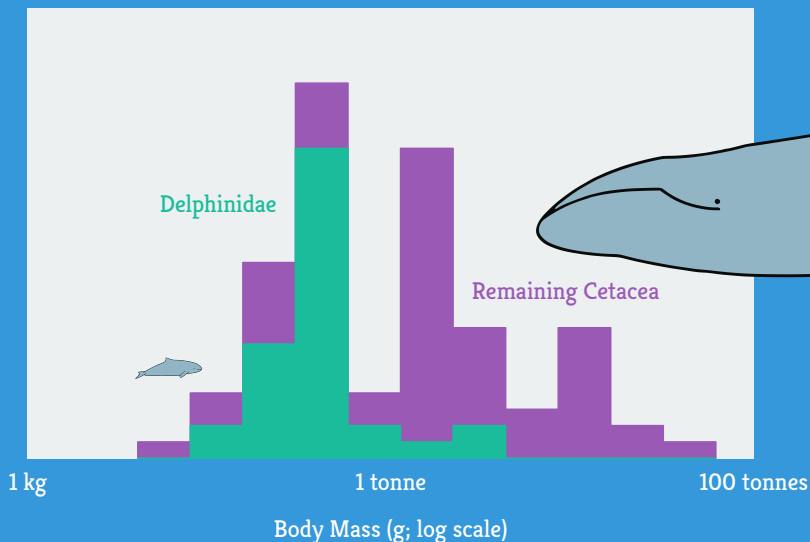
OF THESE METHODS

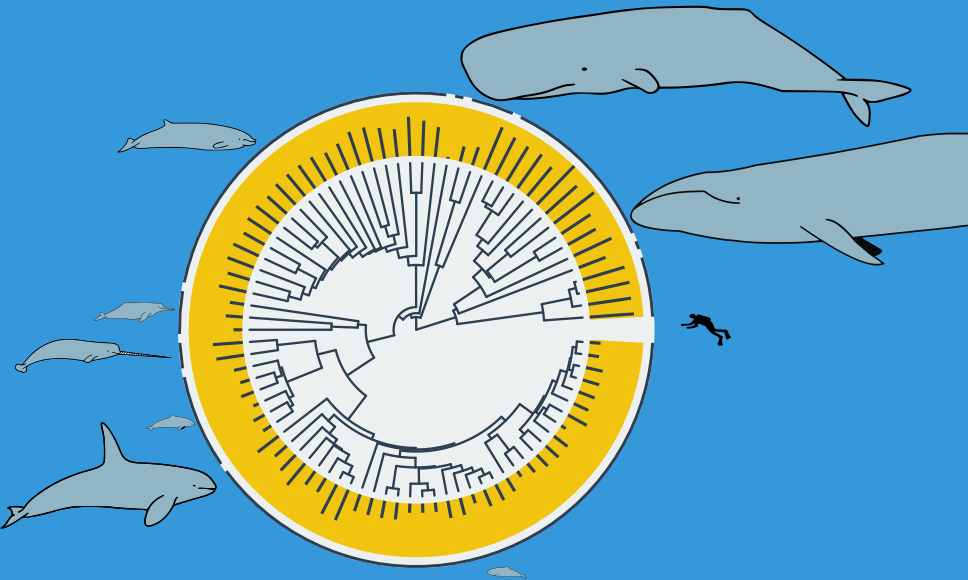
SIGNIFICANT
VS
REPLICATED



Tree: Steeman et al. 2009

Data: Nick Pyenson, unpublished

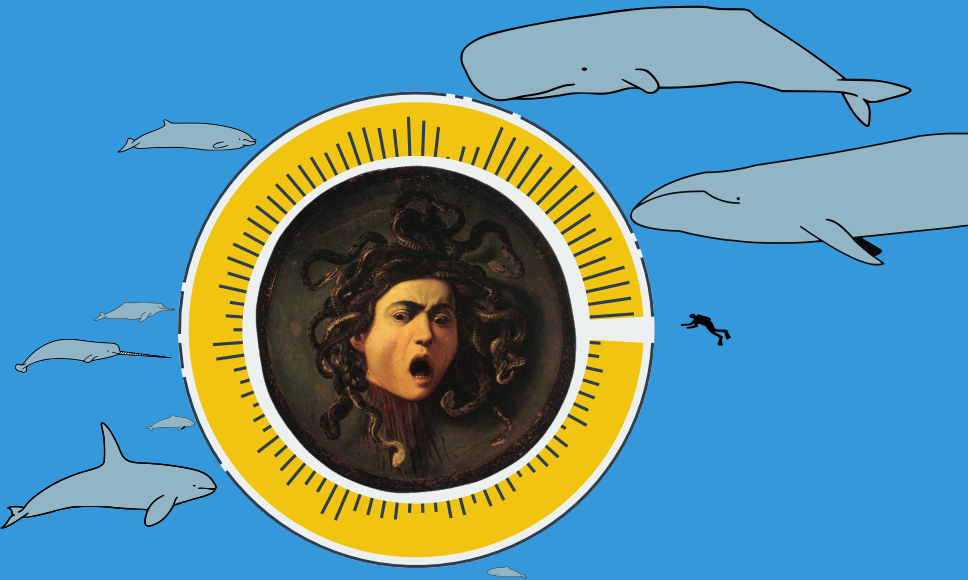


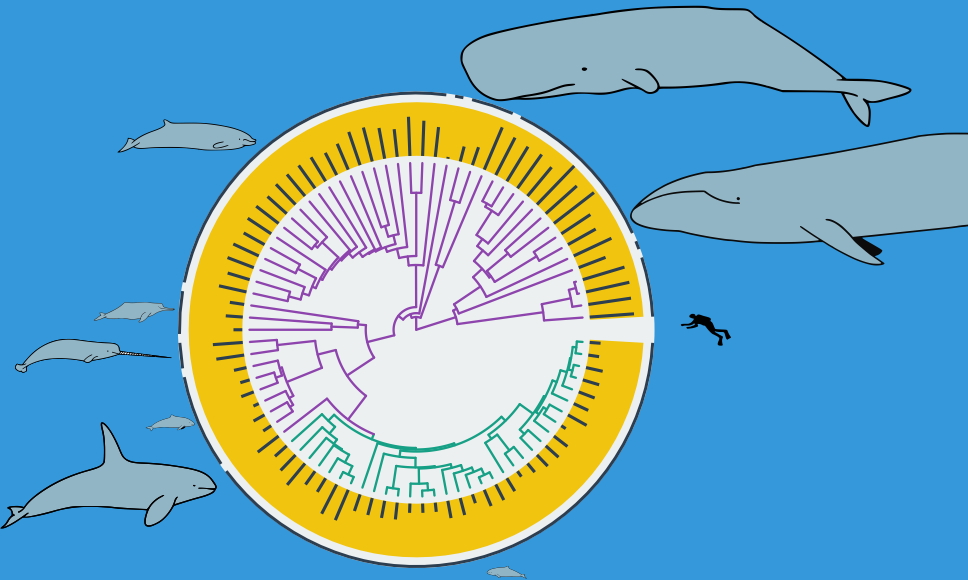


Tree: Steeman et al. 2009

Data: Nick Pyenson, unpublished

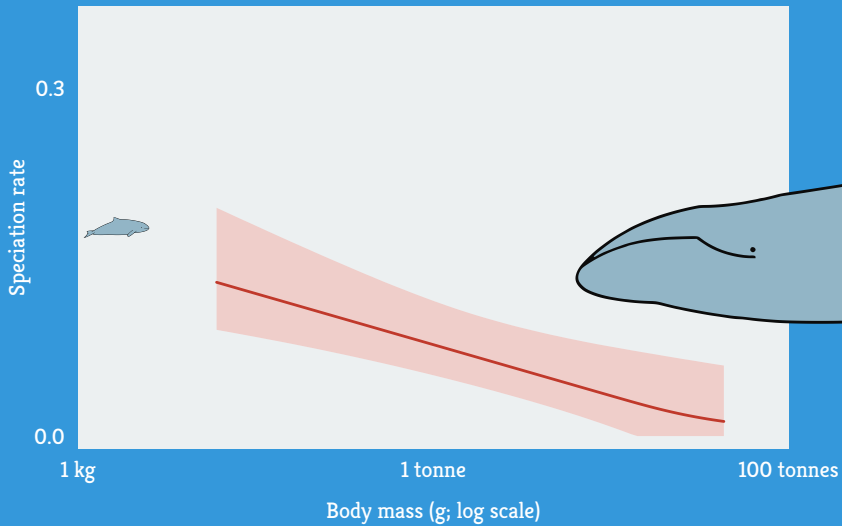
MEDUSA

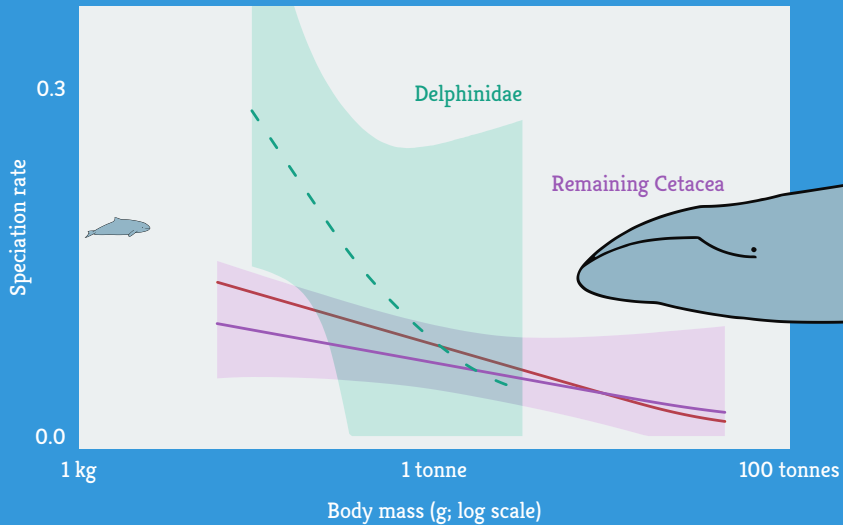


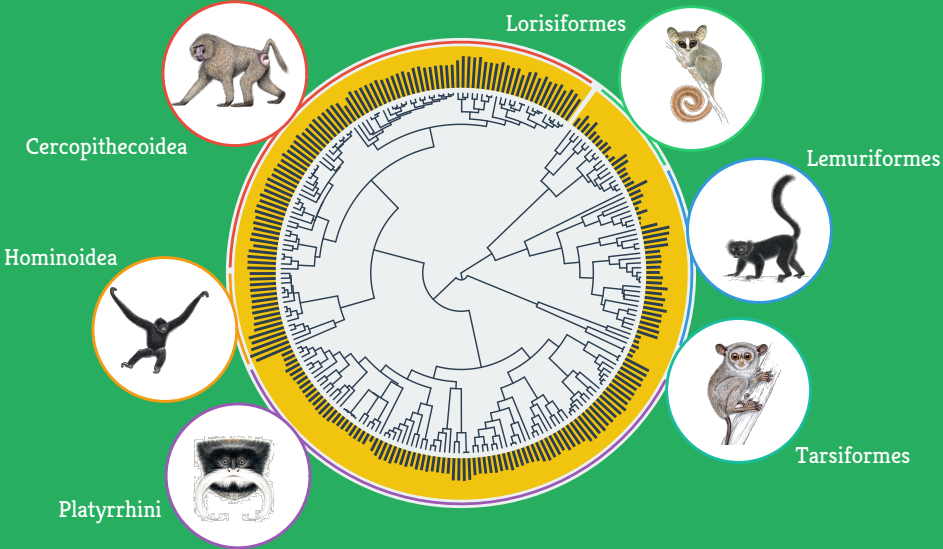


Tree: Steeman et al. 2009

Data: Nick Pyenson, unpublished







Cercopithecoidea

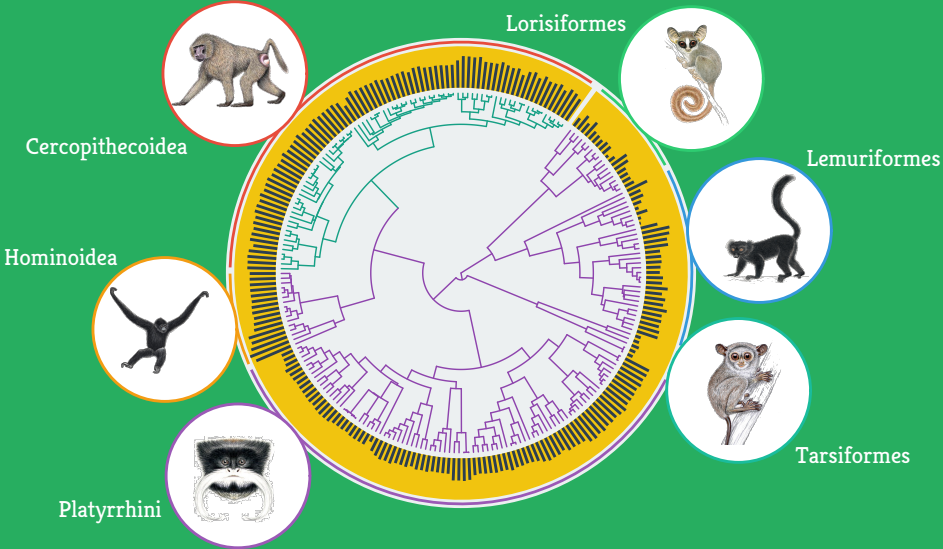
Lorisiformes

Lemuriformes

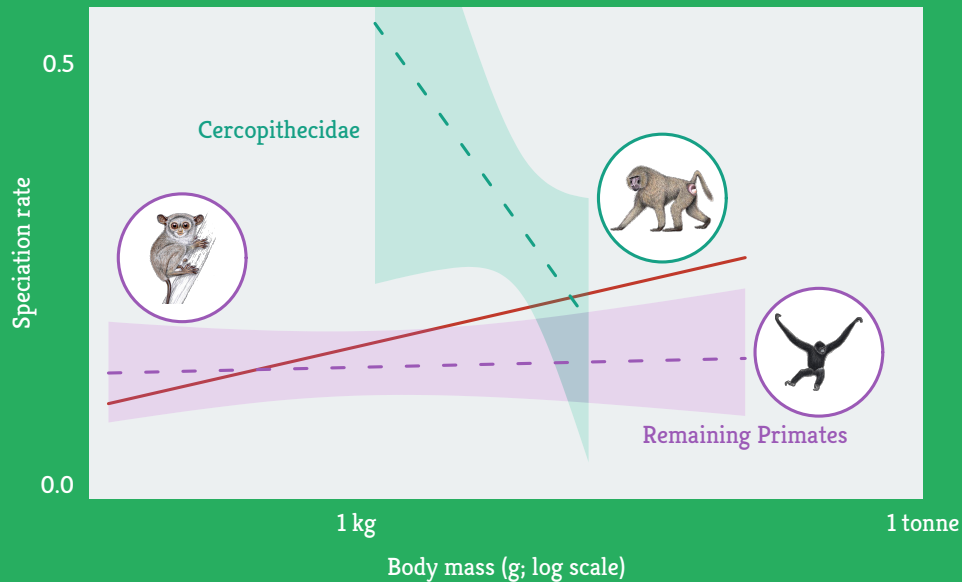
Hominoidea

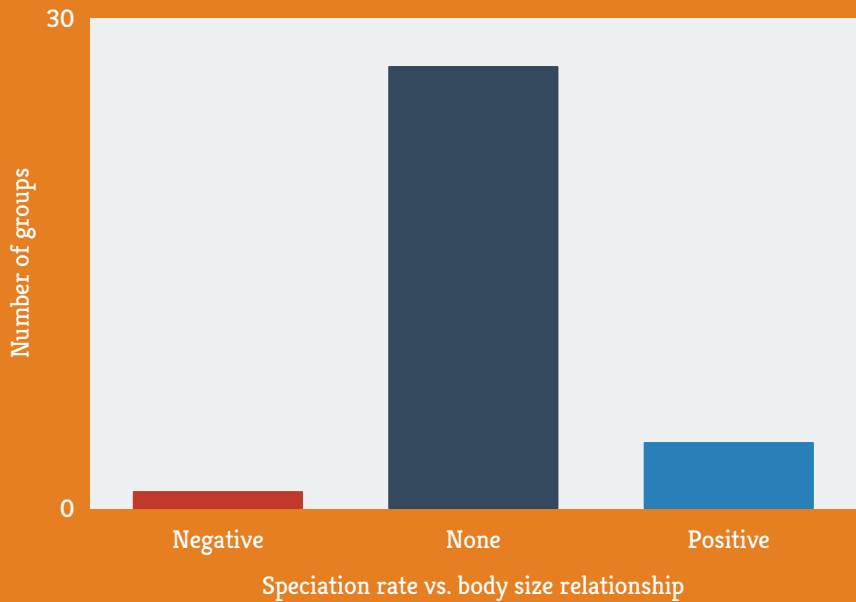
Tarsiformes

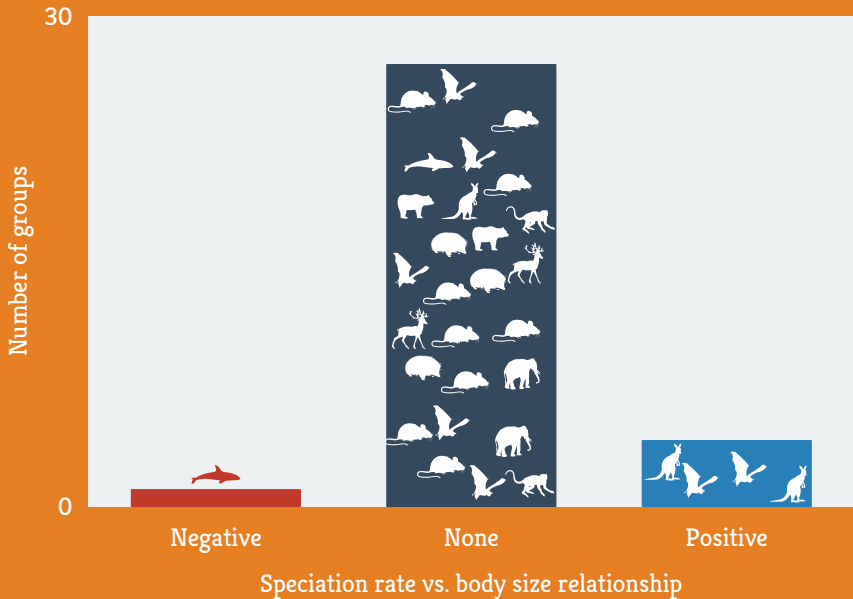
Platyrrhini

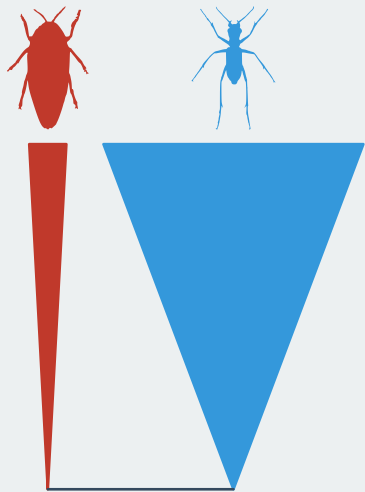


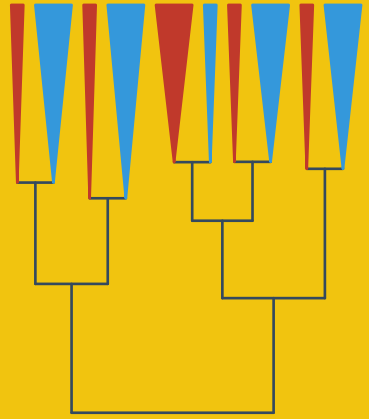
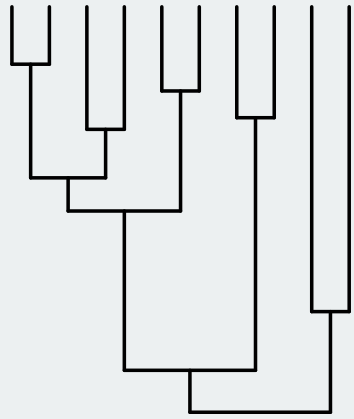


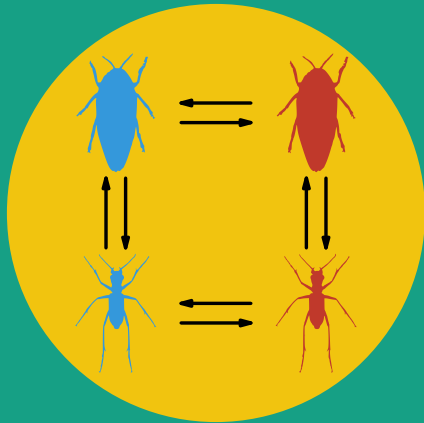






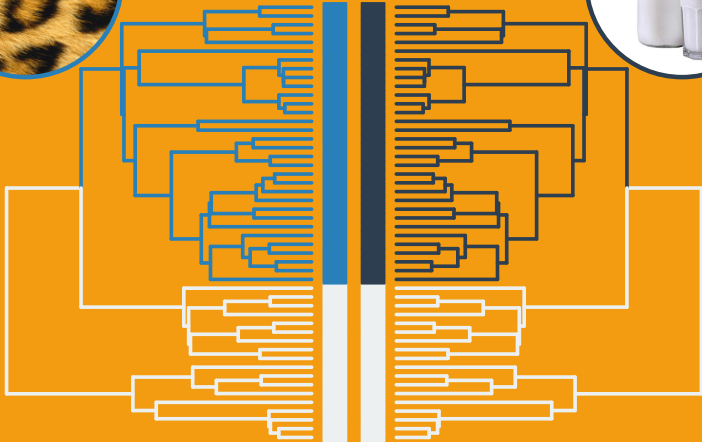


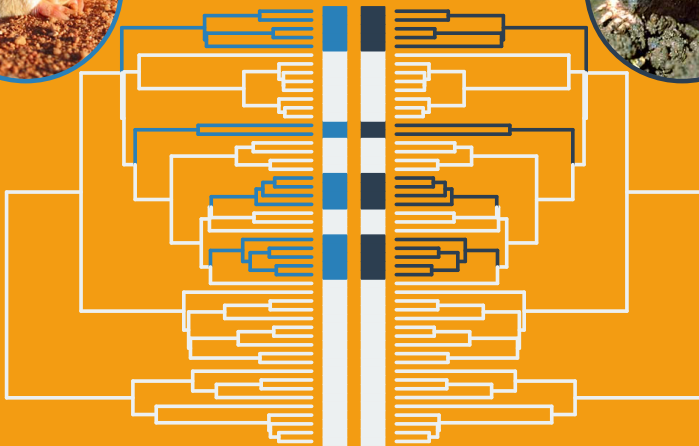


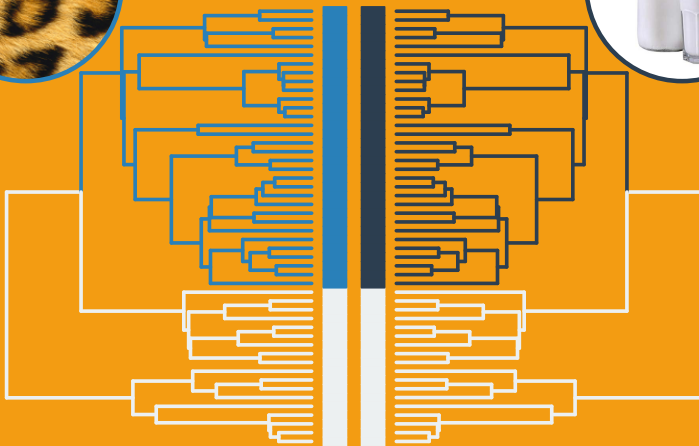


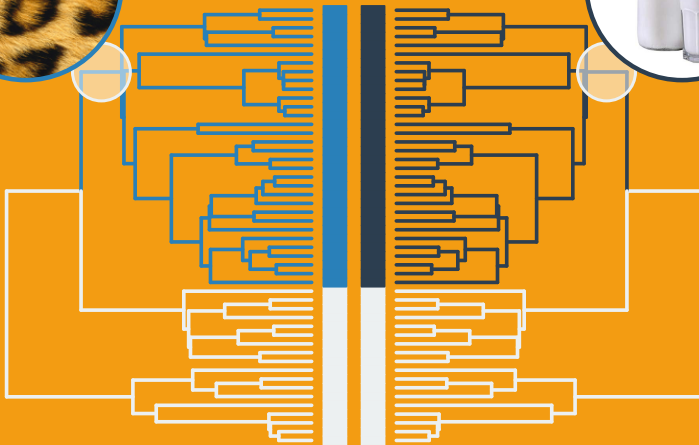
with Wayne Maddison





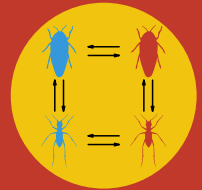




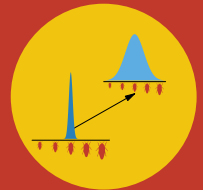


**WE HAVE
VERY SIMPLE MODELS**

Morphological traits
do not evolve like
DNA



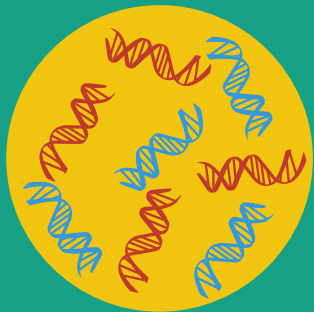
Quantitative traits
do not follow
Brownian motion

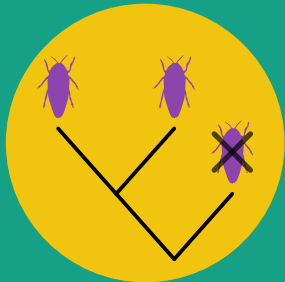


Diversification
does not follow
a birth death process

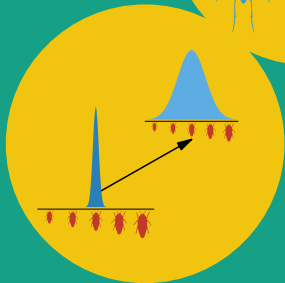
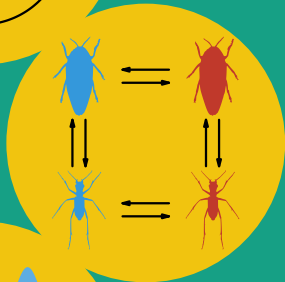
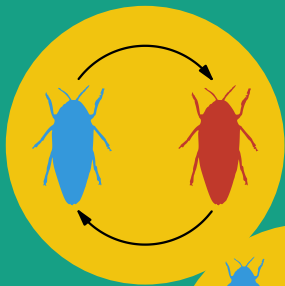


SUMMARY



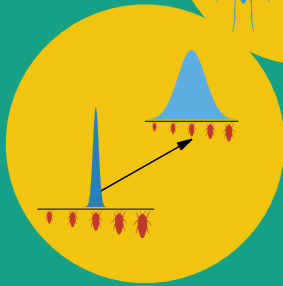
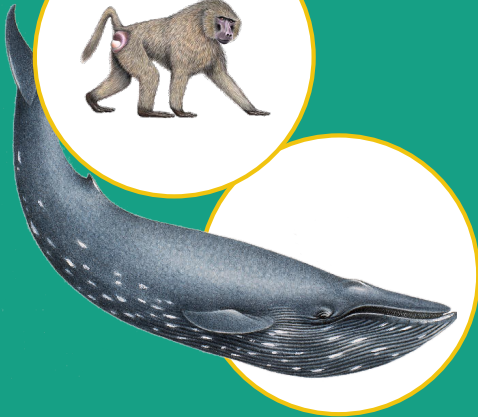
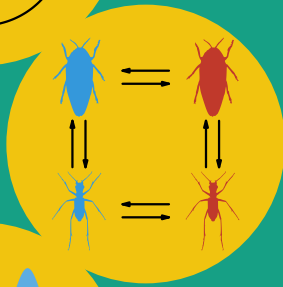
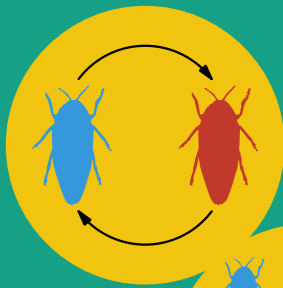


+





www.zoology.ubc.ca/prog/diversitree
github.com/richfitz/diversitree



Acknowledgements

Sally Otto

Wayne Maddison

Otto & Westoby Labs

Emma Goldberg

Boris Igic

Marc Johnson

Leithen M'Gonigle

Arne Mooers

Matt Pennell



NSERC
CRSNG



Data:

Gavin Thomas, Terje Lislevand (shorebirds)

Rutger Vos, David Redding, Arne Mooers (primates)

Olaf Bininda-Emonds, Kate Jones, Nick Isaac (all mammals)

Mette Steeman, Nick Pyenson (Cetacea)

Images: Biodiversity Heritage Library: [flickr.com/photos/biodivlibrary](https://www.flickr.com/photos/biodivlibrary)

